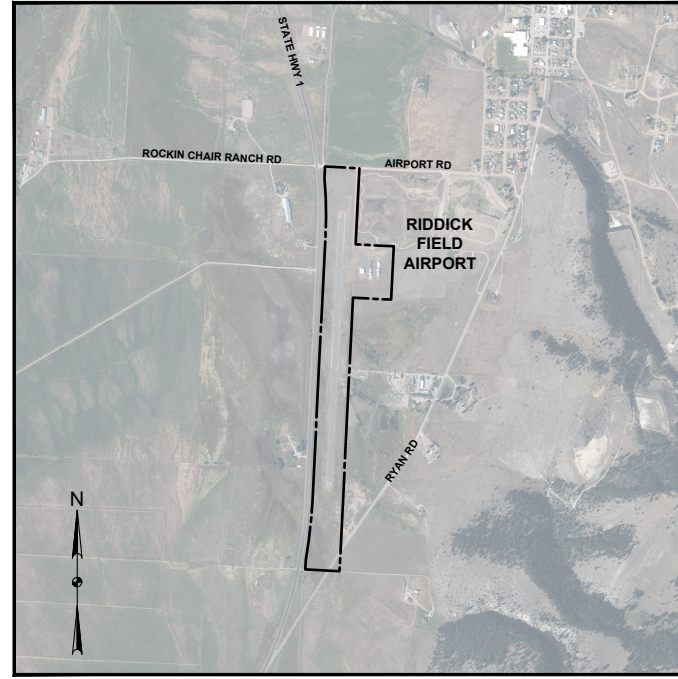


VICINITY MAP
(NO SCALE)



AIRPORT LAYOUT PLAN

FOR

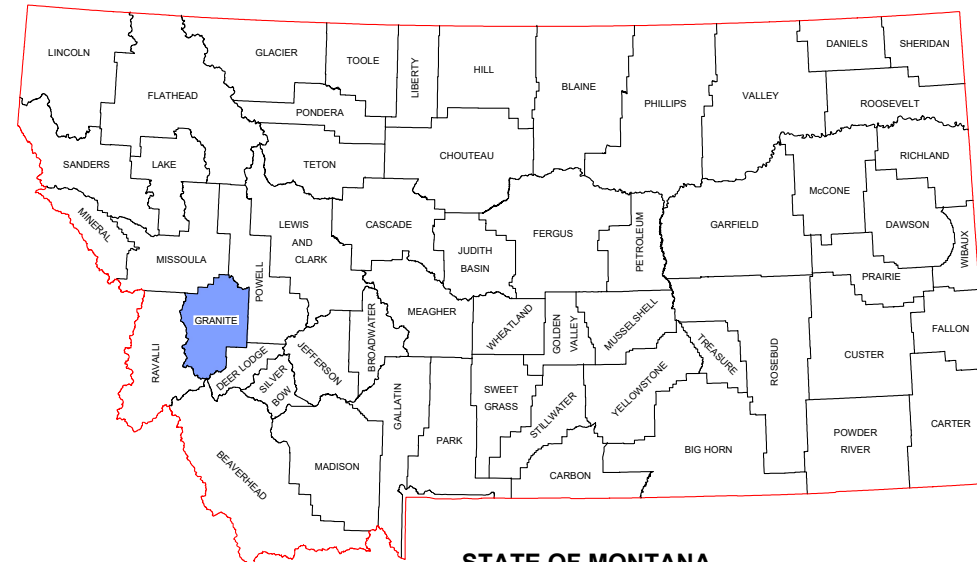
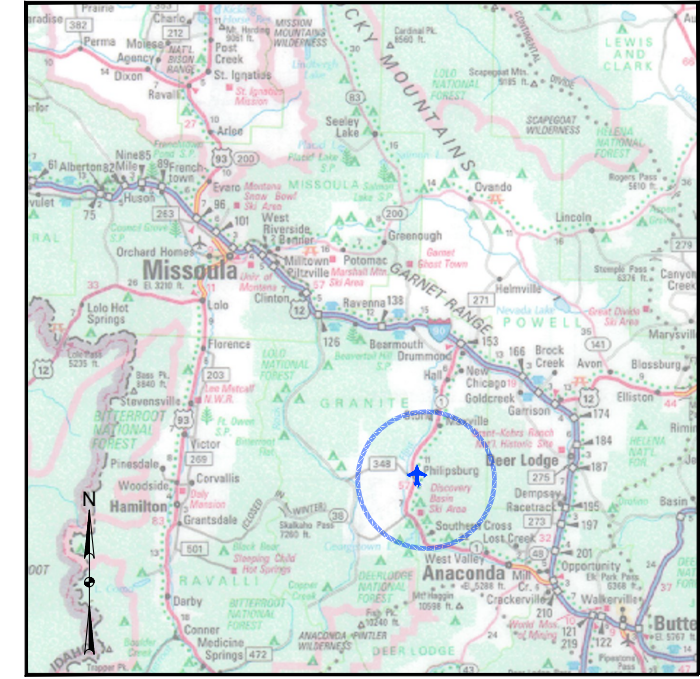
RIDDICK FIELD AIRPORT

PHILIPSBURG, GRANITE COUNTY, MONTANA

GRANITE COUNTY (OWNER)

August 2022

LOCATION MAP
(NO SCALE)



STATE OF MONTANA

REVISION DATE

SHEET INDEX
1. TITLE SHEET
2. AIRPORT DATA SHEET
3. AIRPORT LAYOUT PLAN
4. TERMINAL AREA
5. INNER PORTION OF THE APPROACH SURFACE - RUNWAY 16 END (EXISTING & ULTIMATE)
6. INNER PORTION OF THE APPROACH SURFACE - RUNWAY 34 END (EXISTING & ULTIMATE)
7. PART 77 AIRSPACE - (ULTIMATE)
8. RUNWAY DEPARTURE SURFACE
9. LAND USE
EX-A1. EXHIBIT "A" PARCEL INVENTORY MAP

ON BEHALF OF GRANITE COUNTY (OWNER), THIS AIRPORT LAYOUT PLAN (ALP) WAS PREPARED BY KLJ AND, IN GENERAL, FOLLOWS APPLICABLE FAA ADVISORY CIRCULARS AT THE TIME THE PROJECT WAS SCOPED. ALL DATA THAT WAS COLLECTED FOR THE PURPOSE OF THIS PROJECT IS ACCURATELY DEPICTED, AND FOLLOWS FAA GUIDELINES WHERE APPLICABLE.

Federal Aviation Administration
January 06, 2025

TO: Granite County
Attn: Dawson Jones, Airport Manager
220 N Sansome St, PO Box 925
Philipsburg, MT 59858
riddickfield@gmail.com

CC: GRANITE COUNTY
220 N SANSOME ST
PO BOX 925
PHILIPSBURG, MT 59858
commission@co.granite.mt.us

RE: (See attached Table 1 for referenced cases)
ALP 7466 No Objection Letter
FINAL DETERMINATION

ASN	Pror ASN	Location	Latitude (NAD83)	Longitude (NAD83)	ASR (ft)	ASR (ft) Alt
2025	ANM4975-NBA	PHILIPSBURG, MT	46°19'42.0"N	113°15'30.0"W	11	5225

Description: ALP upload for airpacing

The proposed change to your currently approved Airport Layout Plan (ALP) submitted, November 11, 2024 has been reviewed under the authority of Part 77 and under the requirements of the Terms and Conditions of Accepting Airport Improvement Program Grants dated September 1, 1996. This review has considered the safety and utility of aircraft operations and planned navigational aids as related to this proposal.

The proposal does not exceed any federal obstruction standard and has no effect on the safe and efficient utilization of the navigable airspace by aircraft or on the operation of air navigation facilities. Therefore, we have no objection to this proposal.

It should be noted that this study did not consider the height of construction equipment. This information needs to be coordinated with this office via an "Airspace Study Checklist" before construction begins.

This study did not evaluate the plans for operational safety during construction. Those plans should be submitted to this office for coordination and review prior to construction.

This determination does not include any environmental analysis or environmental approval for this proposal. All local and state requirements and/or permits must be obtained to prior to construction of this proposal.

This determination does not include approval of any lease, does not release any surplus or grant agreement, acquired airport property, nor does it release the airport owner or the proponent of compliance with Part 155, or any other law, ordinance, or regulation of federal, state, or local government body or organization. Furthermore, the design and location of any surveillance or communication facilities on or near the airport must comply

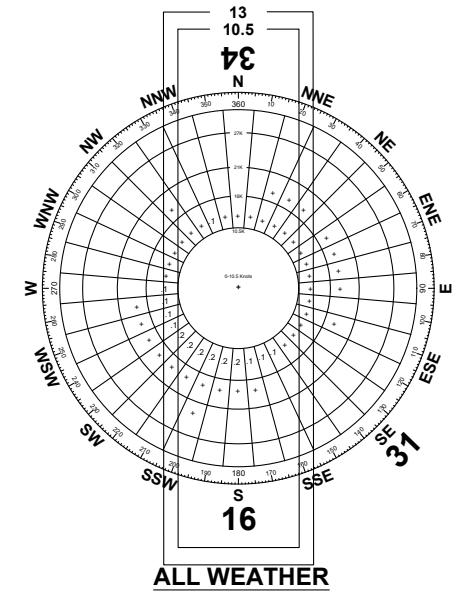
Page 1 of 2

with FAA Advisory Circular 150/5200-33 "Hazardous Wildlife Attractants on or Near Airports", and must be approved on the ALP prior to construction.

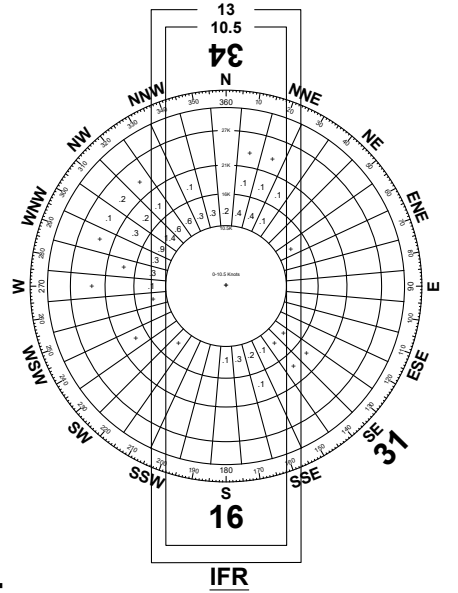
We look forward to working with you in the continued development of your airport. If you have any questions, please contact me at (406) 441-3486, mary.c.stinch@faa.gov.

Mary C. Stinch
Mary C. Stinch
ADJ
Signature Control No: 63872688-DRAFT

Page 2 of 2



ALL WEATHER WINDROSE



IFR WINDROSE

CONFIGURATION	CROSSWIND COMPONENT	
	10.5 KNOTS	13 KNOTS
RUNWAY 16-34	99.34%	99.88%

SOURCE: PHGM8 RAW'S (2010-2019, HOURLY) FROM UTAH MESOWEST
LOCATED AT PHILIPSBURG RANGER STATION 0.3 MILES EAST OF AIRPORT
87,373 TOTAL OBSERVATIONS

CONFIGURATION	CROSSWIND COMPONENT	
	10.5 KNOTS	13 KNOTS
RUNWAY 16-34	97.59%	98.67%

SOURCE: BUTTE ASOS (2010-2019, HOURLY) FROM NATIONAL CLIMATIC DATA CENTER
2,775 TOTAL OBSERVATIONS
IFR = VISIBILITY LOWER THAN 3 MILES OR CEILING LOWER THAN 1,000 FEET

Rev.	Date	Description

RIDDICK FIELD AIRPORT
 GRANITE COUNTY (OWNER)
 PHILIPSBURG, MONTANA

PROJ. #2005-00886

TITLE SHEET

DRAFTED
 TLG
 REVIEWED
 ARTZ
 PROJECT NUMBER
 2005-00886

SHEET 1



TO BE USED AS A COMPLETE DRAWING SET FOR PLANNING PURPOSES ONLY, NOT FOR CONSTRUCTION



RIDDICK FIELD AIRPORT
 GRANITE COUNTY (OWNER)
 PHILIPSBURG, MONTANA

TO BE USED AS A COMPLETE DRAWING SET FOR PLANNING PURPOSES ONLY, NOT FOR CONSTRUCTION

AIRPORT DATA SHEET

DRAFTED
 MTK
 REVIEWED
 ARTZ
 PROJECT NUMBER
 2005-00886

SHEET
2

RUNWAY DATA TABLE				
ITEM	PRIMARY RUNWAY 16/34			
	EXISTING (E)		FUTURE (F)	
RUNWAY DESIGNATION	16	34	17	35
RUNWAY DESIGN CODE (RDC)	B-I(S)-VIS	B-I(S)-VIS	B-I(S)-5000	B-I(S)-VIS
APPROACH REFERENCE CODE (APRC)	N/A	N/A	N/A	N/A
DEPARTURE REFERENCE CODE (DPRC)	N/A	N/A	N/A	N/A
RUNWAY DIMENSIONS	3598' x 60'		3598' x 60'	
RUNWAY LENGTH CRITERIA	SMALL, <10 PX (95% FLEET)		SMALL, <10 PX (95% FLEET)	
CRITICAL AIRCRAFT (TYPE)	A/B-(small)		A/B-(small)	
CRITICAL AIRCRAFT (WINGSPAN)	48.99'		48.99'	
CRITICAL AIRCRAFT (TAIL HEIGHT)	19.99'		19.99'	
CRITICAL AIRCRAFT (APPROACH SPEED)	120 (Kts.)		120 (Kts.)	
MAXIMUM TAKEOFF WEIGHT (MTOW)	12500 (LBS.)		12500 LBS.	
RUNWAY END ELEVATION	5197.8'	5219'	5207.1'	5219.5'
TOUCHDOWN ZONE ELEVATION (TDZE)	5211.4'	5219'	5210.4'	5219.5'
RUNWAY GRADIENT	0.589%		0.345%	
MAX GRADE WITHIN RUNWAY LENGTH (%)	2.000%		2.000%	
RUNWAY MEETS LINE OF SIGHT REQUIREMENTS	YES		YES	
RUNWAY LIGHTING	MIRL		MIRL	
PAVEMENT TYPE	BITUMINOUS		BITUMINOUS	
RUNWAY CATEGORY	UTILITY		UTILITY	
PAVEMENT STRENGTH (WHEEL-LOAD)	7000 LBS (SW)		12500 LBS (SW)	
PAVEMENT CLASSIFICATION NUMBER (PCN)	-		-	
PAVEMENT MARKINGS	VISUAL	VISUAL	NON-PRECISION	NON-PRECISION
SURFACE TREATMENT	NONE		NONE	
RUNWAY SAFETY AREA (RSA)	4078' x 120'		4078' x 120'	
RUNWAY OBJECT FREE AREA (OFA)	4078' x 250'		4078' x 250'	
RUNWAY OBSTACLE FREE ZONE (OFZ)	3998' x 250'		3998' x 250'	
14 CFR PART 77 APPROACH TYPE	VISUAL	VISUAL	NON-PRECISION	VISUAL
14 CFR PART 77 APPROACH SLOPE	20:1	20:1	20:1	20:1
14 CFR PART 77 APPROACH DIMENSIONS	250 X 1250 X 5000	250 X 1250 X 5000	500 X 2000 X 5000	500 X 1250 X 5000
VISIBILITY MINIMUMS	VISUAL	VISUAL	1 MILE	VISUAL
THRESHOLD SITING SURFACE (TSS) CATEGORY	2	2	5	2
THRESHOLD SITING SURFACE (TSS) SLOPE	20:1	20:1	20:1	20:1
THRESHOLD SITING SURFACE (TSS) DIMENSIONS	STARTS AT THRESHOLD, 250' X 700' X 2250' X 2750'	STARTS AT THRESHOLD, 250' X 700' X 2250' X 2750'	STARTS 200' FROM THRESHOLD, 400' X 3400' X 10000'	STARTS AT THRESHOLD, 250' X 700' X 2250' X 2750'
GLIDEPATH QUALIFICATION SURFACE (GQS)	NONE		30:1	NONE
GLIDEPATH QUALIFICATION SURFACE (GQS) DIMENSIONS	NONE		260' X 1520' X 10000'	NONE
DEPARTURE SURFACE	NONE		40:1	40:1
DEPARTURE SURFACE DIMENSIONS	NONE		1000' X 7512' X 12512'	1000' X 7512' X 12512'
AERONAUTICAL SURVEY TYPE REQUIRED	NON-VERT. GUIDED	NON-VERT. GUIDED	VERTICALLY GUIDED	VERTICALLY GUIDED
RUNWAY ORIENTATION (TRUE)	179.97°	359.97°	179.97°	359.97°
MAGNETIC DECLINATION (2021)	12.63° (E)	12.63° (E)	12.63° (E)	12.63° (E)
RUNWAY ORIENTATION (MAGNETIC)	167.34°	347.34°	167.34°	347.34°
VISUAL AND INSTRUMENT NAVIDS (NAVIDS)	-	-	GPS, PAPI	PAPI
DISPLACED THRESHOLD	None	None	None	None
TAKEOFF RUNWAY AVAILABLE (TORA)	3598'	3598'	3598'	3598'
TAKEOFF DISTANCE AVAILABLE (TODA)	3598'	3598'	3598'	3598'
ACCELERATED STOP DISTANCE AVAILABLE (ASDA)	3598'	3598'	3598'	3598'
LANDING DISTANCE AVAILABLE (LDA)	3598'	3598'	3598'	3598'
RPZ DIMENSIONS - APPROACH	250' X 450' X 1000'	250' X 450' X 1000'	250' X 450' X 1000'	250' X 450' X 1000'
RPZ DIMENSIONS - DEPARTURE	250' X 450' X 1000'	250' X 450' X 1000'	250' X 450' X 1000'	250' X 450' X 1000'

AIRPORT DATA TABLE		
ITEM	EXISTING (E)	FUTURE (F)
AIRPORT REFERENCE CODE (ARC)	B-I (SMALL)	B-I (SMALL)
AIRPORT OWNERSHIP	PUBLIC	PUBLIC
NPIAS SERVICE LEVEL	GENERAL AVIATION - OTHER	GENERAL AVIATION - OTHER
NPIAS ASSET CLASSIFICATION	BASIC	BASIC
STATE SYSTEM PLAN SERVICE LEVEL	GENERAL AVIATION - LEVEL 4	GENERAL AVIATION - LEVEL 4
AIRPORT ELEVATION (MSL)	5219'	5219.5'
AIRPORT REFERENCE POINT (ARP)	(N) 46° 19' 02.471" (W) 113° 18' 18.542"	(N) 46° 19' 02.471" (W) 113° 18' 18.542"
MEAN MAX TEMPERATURE (MONTH)	80.3° (AUG.)	
AIRPORT NAVIDS (FAA-OWNED)	-	-
AIRPORT NAVIDS (SPONSOR-OWNED)	Lighted Windcone, Airport Beacon	Lighted Windcone, Airport Beacon
MISCELLANEOUS FACILITIES	-	-
MAGNETIC DECLINATION www.ngdc.noaa.gov/geomag-web/#declination	12.63° (E)	12.63° (E)
MAGNETIC DECLINATION DATE	2021	2021

NOTES:

- DATA USED WITHIN THIS AIRPORT LAYOUT PLAN SET IS BASED ON:
 - AC 150/5300-13B AIRPORT DESIGN
 - AERONAUTICAL SURVEY (TOPOGRAPHIC) COMPLETED SEPTEMBER 28, 2020 BY KLJ.
 - AERONAUTICAL SURVEY (AERIAL) FLOWN SEPTEMBER 09, 2020 BY QUANTUM SPATIAL.
 - USGS NATIONAL ELEVATION DATASET AT 1/3 ARC SECOND.
 - NOAA NATIONAL FLIGHT DATA CENTER DIGITAL OBSTACLE FILE FROM 07/11/2021.
 - QUADRANGLE MAPS FROM USGS.
 (DATA IS ONLY AS ACCURATE AS THE SOURCES LISTED. ANY TOWERS, STRUCTURES, OR OBJECTS CONSTRUCTED AFTER THESE DATES ARE NOT REPRESENTED IN THIS AIRPORT LAYOUT PLAN SET.)
- HORIZONTAL DATUM = STATE PLANE, NAD 83 (2011), MT - FIPS 2500, INTERNATIONAL FEET.
- VERTICAL DATUM = NAVD 88, U.S. SURVEY FEET
- LATITUDE & LONGITUDE CALCULATED USING CORPSCON VERSION 6.0.1.

TAXIWAY DATA TABLE		
ITEM	EXISTING (E)	FUTURE (F)
HIGHEST TAXIWAY DESIGN GROUP (TDG)	1A	1A
TAXIWAY WIDTH	25'	25'
TAXIWAY SAFETY AREA WIDTH	49'	49'
TAXIWAY OBJECT FREE AREA WIDTH	89'	89'
TAXIWAY EDGE SAFETY MARGIN	5'	5'
TAXIWAY SHOULDER WIDTH	10'	10'
TAXIWAY LIGHTING	NONE	MITL
HIGHEST TAXILANE DESIGN GROUP (TDG)	1A	1A
TAXILANE WIDTH	25'	25'
TAXILANE OBJECT FREE AREA WIDTH	79'	79'
TAXILANE LIGHTING	NONE	REFLECTORS

COORDINATE SUMMARY TABLE			
Point	Elevation	Latitude	Longitude
ARP (E & F)	N/A	N 46° 19' 02.471"	W 113° 18' 18.542"
Rwy 16 End (E)	5197.8	N 46° 19' 20.229"	W 113° 18' 18.558"
Rwy 16 TDZE (E)	5211.4	N 46° 18' 50.599"	W 113° 18' 18.532"
Rwy 17 End (F)	5207.1	N 46° 19' 20.229"	W 113° 18' 18.558"
Rwy 17 TDZE (F)	5210.4	N 46° 18' 50.599"	W 113° 18' 18.532"
Rwy 34 End, TDZE & AIRPORT ELEVATION (E)	5219.0	N 46° 18' 44.713"	W 113° 18' 18.527"
Rwy 35 End, TDZE & AIRPORT ELEVATION (F)	5219.5	N 46° 18' 44.713"	W 113° 18' 18.527"

RWY = Runway TDZE = Touchdown Zone Elevation ARP = Airport Reference Point

Rev.	Date	Description



RIDDICK FIELD AIRPORT
GRANITE COUNTY (OWNER)
PHILIPSBURG, MONTANA

AIRPORT LAYOUT PLAN

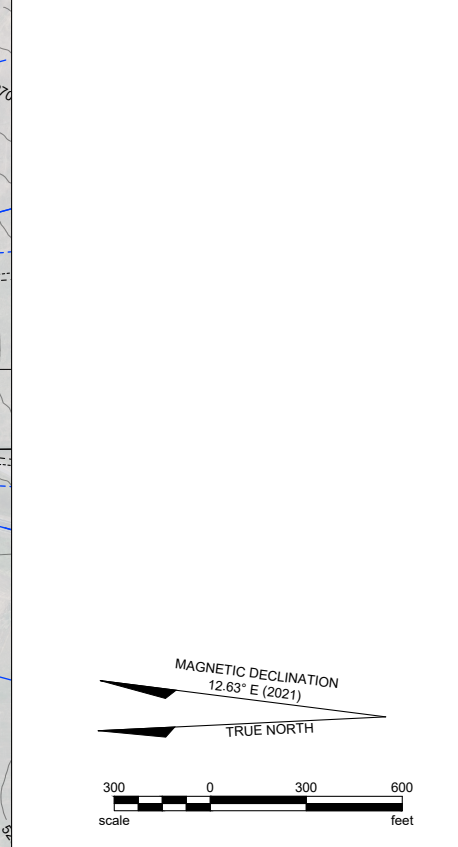
DRAFTED
REVIEWED
ARTZ
PROJECT NUMBER
2005-00886

SHEET
3

© KLJ 2022

NOTES:
1. SEE SHEET 2 FOR AIRPORT & RUNWAY DATA TABLES.
2. SEE INNER APPROACH SHEETS FOR OBSTACLE DATA.
3. OBJECTS WITHIN 500' MUST REMAIN 15' BELOW WIND SENSOR.
4. OBJECTS 500'-1000' MUST REMAIN 10' BELOW WIND SENSOR.

EXISTING (E)	ITEM	FUTURE (F)
---	AIRPORT PROPERTY	---
---	AIRSPACE EASEMENT	---
---	20' BUILDING RESTRICTION LINE (BRL)	---
---	RUNWAY OBJECT FREE AREA (OFA)	---
---	RUNWAY SAFETY AREA (RSA)	---
---	TAXIWAY OBJECT FREE AREA (TOFA)	---
---	BUILDING/BUILDING LOT	---
---	AIRSIDE PAVED SURFACE	---
---	LANDSIDE ROAD/PARKING	---
---	UNPAVED SURFACE (GRAVEL)	NONE
---	DECIDUOUS/EVERGREEN TREE	NONE
---	TREE ROWS, BUSHES	NONE
---	BARBED WIRE FENCE	---
---	POWER POLE/LIGHT POLE	---
---	AIRPLANE TIEDOWN	---
---	RUNWAY THRESHOLD LIGHT	---
---	TAXIWAY LIGHT/TAXIWAY REFLECTOR	---
---	AIRPORT/DISTANCE TO GO SIGN	---
---	CULVERT WITH END SECTION	---
---	BUILDING/PAVEMENT TO BE REMOVED	---

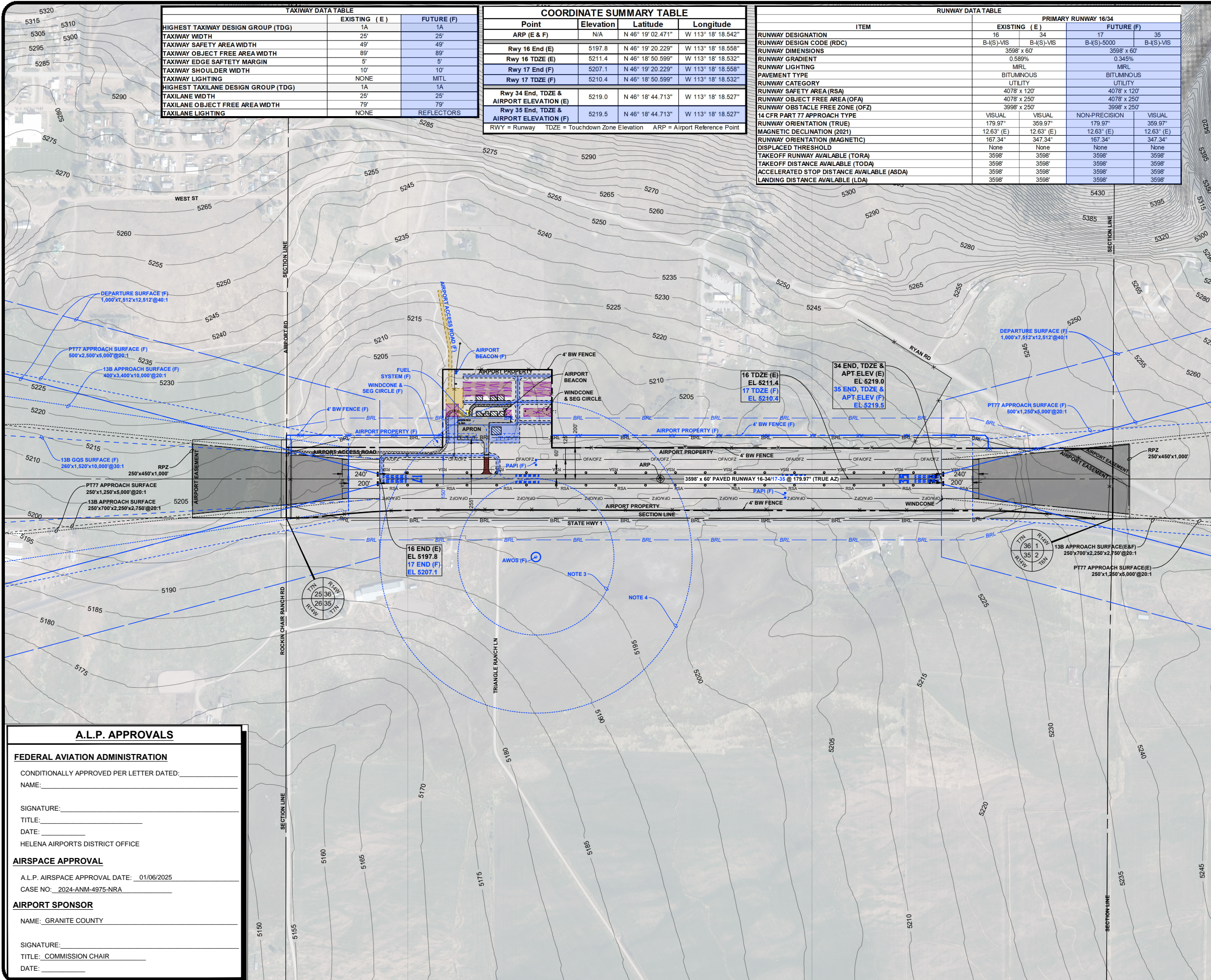


ITEM	PRIMARY RUNWAY 16/34			
	EXISTING (E)	EXISTING (E)	FUTURE (F)	FUTURE (F)
16	34	17	35	
RUNWAY DESIGN CODE (RDC)	B-(S)-VIS	B-(S)-VIS	B-(S)-5000	B-(S)-VIS
RUNWAY DIMENSIONS	3598' x 60'	0.589%	3598' x 60'	0.345%
RUNWAY GRADIENT	MIRL	MIRL	MIRL	MIRL
RUNWAY LIGHTING	BITUMINOUS	BITUMINOUS	BITUMINOUS	BITUMINOUS
PAVEMENT TYPE	UTILITY	UTILITY	UTILITY	UTILITY
RUNWAY CATEGORY	4078' x 120'	4078' x 120'	4078' x 250'	4078' x 250'
RUNWAY SAFETY AREA (RSA)	4078' x 250'	4078' x 250'	4078' x 250'	4078' x 250'
RUNWAY OBJECT FREE AREA (OFA)	3998' x 250'	3998' x 250'	3998' x 250'	3998' x 250'
RUNWAY OBSTACLE FREE ZONE (OFZ)				
14 CFR PART 77 APPROACH TYPE	VISUAL	VISUAL	NON-PRECISION	VISUAL
RUNWAY ORIENTATION (TRUE)	179.97°	359.97°	179.97°	359.97°
MAGNETIC DECLINATION (2021)	12.63° (E)	12.63° (E)	12.63° (E)	12.63° (E)
RUNWAY ORIENTATION (MAGNETIC)	167.34°	347.34°	167.34°	347.34°
DISPLACED THRESHOLD	None	None	None	None
TAKEOFF RUNWAY AVAILABLE (TORA)	3598'	3598'	3598'	3598'
TAKEOFF DISTANCE AVAILABLE (TODA)	3598'	3598'	3598'	3598'
ACCELERATED STOP DISTANCE AVAILABLE (ASDA)	3598'	3598'	3598'	3598'
LANDING DISTANCE AVAILABLE (LDA)	3598'	3598'	3598'	3598'

COORDINATE SUMMARY TABLE				
Point	Elevation	Latitude	Longitude	
ARP (E & F)	N/A	N 46° 19' 02.471"	W 113° 18' 18.542"	
Rwy 16 End (E)	5197.8	N 46° 19' 20.229"	W 113° 18' 18.558"	
Rwy 16 TDZE (E)	5211.4	N 46° 18' 50.599"	W 113° 18' 18.532"	
Rwy 17 End (F)	5207.1	N 46° 19' 20.229"	W 113° 18' 18.558"	
Rwy 17 TDZE (F)	5210.4	N 46° 18' 50.599"	W 113° 18' 18.532"	
Rwy 34 End, TDZE & AIRPORT ELEVATION (E)	5219.0	N 46° 18' 44.713"	W 113° 18' 18.527"	
Rwy 35 End, TDZE & AIRPORT ELEVATION (F)	5219.5	N 46° 18' 44.713"	W 113° 18' 18.527"	

RWY = Runway TDZE = Touchdown Zone Elevation ARP = Airport Reference Point

TAXIWAY DATA TABLE		
	EXISTING (E)	FUTURE (F)
HIGHEST TAXIWAY DESIGN GROUP (TDG)	1A	1A
TAXIWAY WIDTH	25'	25'
TAXIWAY SAFETY AREA WIDTH	49'	49'
TAXIWAY OBJECT FREE AREA WIDTH	89'	89'
TAXIWAY EDGE SAFETY MARGIN	5'	5'
TAXIWAY SHOULDER WIDTH	10'	10'
TAXIWAY LIGHTING	NONE	MITL
HIGHEST TAXILANE DESIGN GROUP (TDG)	1A	1A
TAXILANE WIDTH	25'	25'
TAXILANE OBJECT FREE AREA WIDTH	79'	79'
TAXILANE LIGHTING	NONE	REFLECTORS



A.L.P. APPROVALS

FEDERAL AVIATION ADMINISTRATION

CONDITIONALLY APPROVED PER LETTER DATED: _____

NAME: _____

SIGNATURE: _____

TITLE: _____

DATE: _____

HELENA AIRPORTS DISTRICT OFFICE

AIRSPACE APPROVAL

A.L.P. AIRSPACE APPROVAL DATE: 01/06/2025

CASE NO. 2024-ANM-4975-NRA

AIRPORT SPONSOR

NAME: GRANITE COUNTY

SIGNATURE: _____

TITLE: COMMISSION CHAIR

DATE: _____



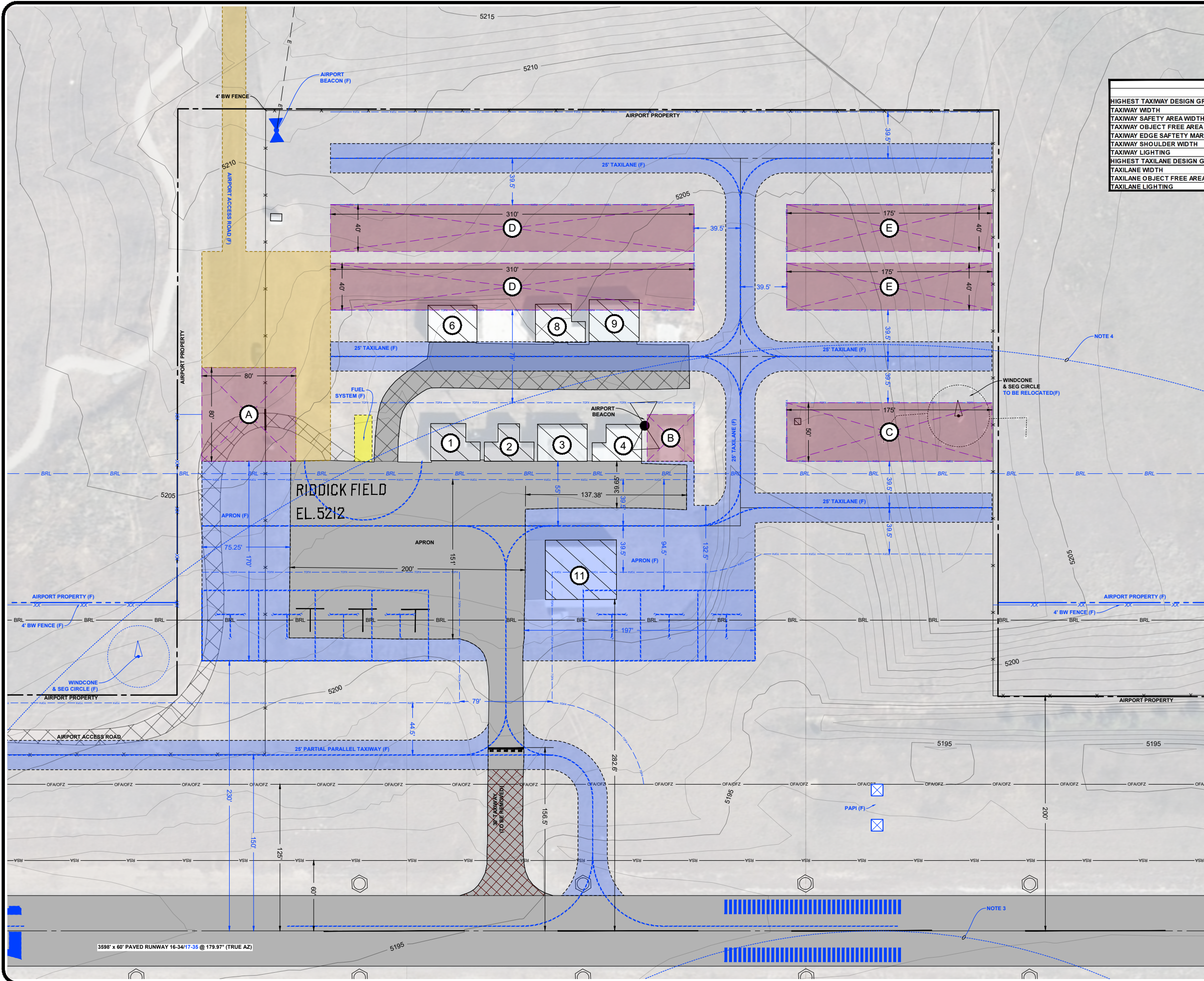
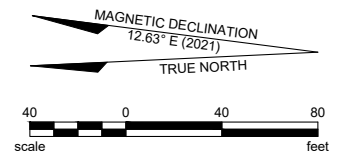
NOTES:
 1. SEE SHEET 2 FOR AIRPORT & RUNWAY DATA TABLES.
 2. SEE INNER APPROACH SHEETS FOR OBSTACLE DATA.
 3. OBJECTS WITHIN 500' MUST REMAIN 15' BELOW WIND SENSOR.
 4. OBJECTS 500'-1000' MUST REMAIN 10' BELOW WIND SENSOR.

TAXIWAY DATA TABLE		
	EXISTING (E)	FUTURE (F)
HIGHEST TAXIWAY DESIGN GROUP (TDG)	1A	1A
TAXIWAY WIDTH	25'	25'
TAXIWAY SAFETY AREA WIDTH	49'	49'
TAXIWAY OBJECT FREE AREA WIDTH	89'	89'
TAXIWAY EDGE SAFETY MARGIN	5'	5'
TAXIWAY SHOULDER WIDTH	10'	10'
TAXIWAY LIGHTING	NONE	MITL
HIGHEST TAXILANE DESIGN GROUP (TDG)	1A	1A
TAXILANE WIDTH	25'	25'
TAXILANE OBJECT FREE AREA WIDTH	79'	79'
TAXILANE LIGHTING	NONE	REFLECTORS

BUILDING IDENTIFICATION TABLE (E)			
ID	DESCRIPTION	PEAK ELEVATION	OBSTRUCTION LIGHTING
1	HANGAR	5218'	N/A
2	HANGAR	5218'	N/A
3	HANGAR	5217'	N/A
4	HANGAR	5217'	N/A
6	HANGAR	5219'	N/A
8	HANGAR	5219'	N/A
9	HANGAR	5220'	N/A
11	HANGAR	5221'	N/A

LOT IDENTIFICATION TABLE (F)	
ID	DESCRIPTION
A	80' x 80' TERMINAL BUILDING
B	40' x 40' HANGAR
C	175' x 50' HANGAR LOT
D	310' x 40' HANGAR LOT
E	175' x 40' HANGAR LOT

LEGEND		
EXISTING (E)	ITEM	FUTURE (F)
---	AIRPORT PROPERTY	---
---	AIRSPACE EASEMENT	---
---	20' BUILDING RESTRICTION LINE (BRL)	---
---	RUNWAY OBJECT FREE AREA (OFA)	---
---	RUNWAY SAFETY AREA (RSA)	---
---	TAXIWAY OBJECT FREE AREA (TOFA)	---
---	N/A	---
---	BUILDING/BUILDING LOT	---
---	AIRSIDE PAVED SURFACE	---
---	LANDSIDE ROAD/PARKING	---
---	UNPAVED SURFACE (GRAVEL)	NONE
---	DECIDUOUS/EVERGREEN TREE	NONE
---	TREE ROWS, BUSHES	NONE
---	BARBED WIRE FENCE	---
---	POWER POLE/LIGHT POLE	---
---	AIRPLANE TIEDOWN	---
---	RUNWAY/THRESHOLD LIGHT	---
---	TAXIWAY LIGHT/TAXIWAY REFLECTOR	---
---	AIRPORT/DISTANCE TO GO SIGN	---
---	CULVERT WITH END SECTION	---
---	N/A	---
---	BUILDING/PAVEMENT TO BE REMOVED	---



RIDDICK FIELD AIRPORT
 GRANITE COUNTY (OWNER)
 PHILIPSBURG, MONTANA

TERMINAL AREA

DRAFTED
 MTK
 REVIEWED
 ARTZ
 PROJECT NUMBER
 2005-00886

SHEET
4

Rev.	Date	Description



RIDDICK FIELD AIRPORT
 GRANITE COUNTY (OWNER)
 PHILIPSBURG, MONTANA

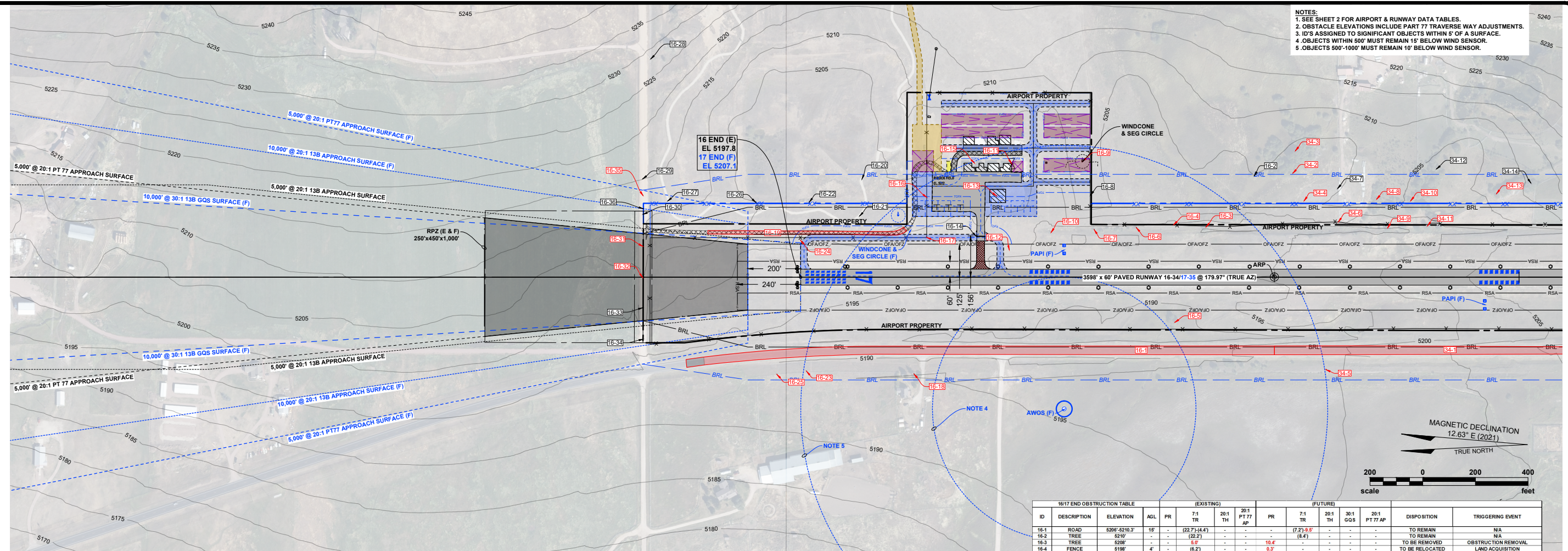
TO BE USED AS A COMPLETE DRAWING SET FOR PLANNING PURPOSES ONLY, NOT FOR CONSTRUCTION

**INNER PORTION OF THE APPROACH SURFACE
 RUNWAY 16 END
 (EXISTING & FUTURE)**

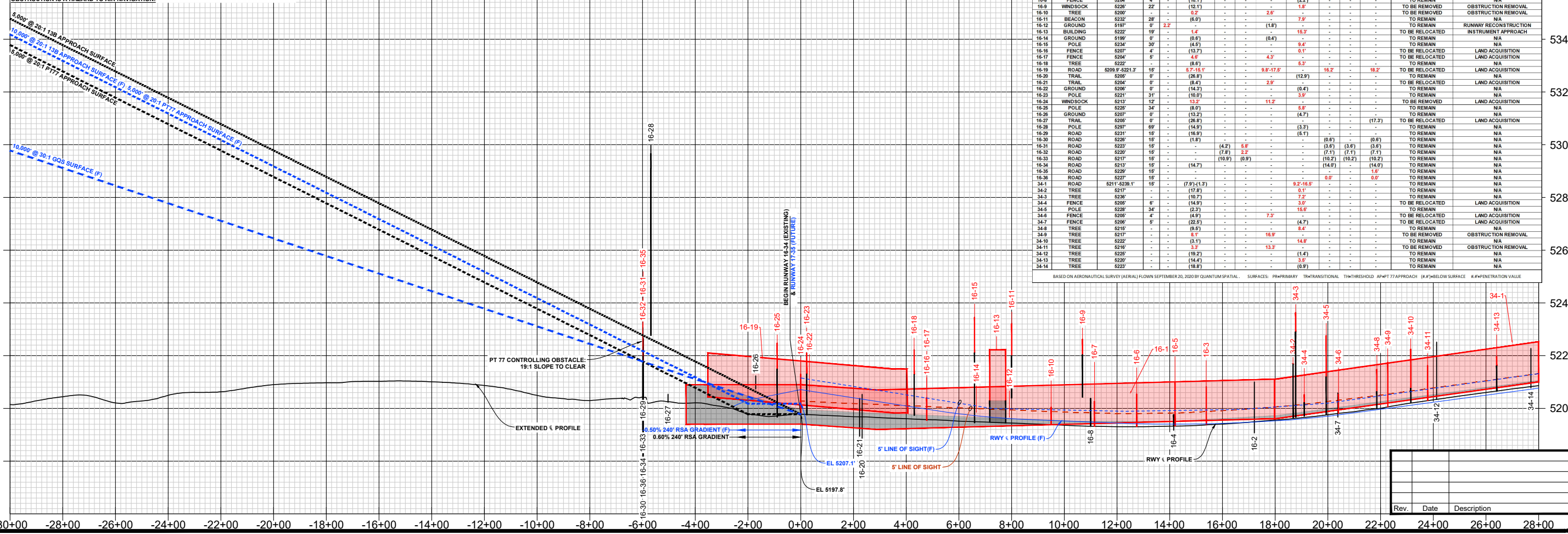
DRAFTED
 REVIEWED
 ARTZ
 PROJECT NUMBER
 2005-00886

SHEET
5

- NOTES:
 1. SEE SHEET 2 FOR AIRPORT & RUNWAY DATA TABLES.
 2. OBSTACLE ELEVATIONS INCLUDE PART 77 TRAVERSE WAY ADJUSTMENTS.
 3. IDs ASSIGNED TO SIGNIFICANT OBJECTS WITHIN 5' OF A SURFACE.
 4. OBJECTS WITHIN 500' MUST REMAIN 15' BELOW WIND SENSOR.
 5. OBJECTS 500'-1000' MUST REMAIN 10' BELOW WIND SENSOR.



NOTE: ANY PORTION OF AN OBSTACLE PENETRATING AN AIRSPACE SURFACE IS SHOWN IN RED BELOW. AN FAA AERONAUTICAL STUDY WILL BE REQUIRED TO DETERMINE IF ANY OBSTRUCTION IS A HAZARD TO AIR NAVIGATION.



1617 END OBSTRUCTION TABLE		(EXISTING)										(FUTURE)		DISPOSITION	TRIGGERING EVENT
ID	DESCRIPTION	ELEVATION	AGL	PR	7:1 TR	20:1 TH	20:1 PT 77 AP	PR	7:1 TR	20:1 TH	20:1 GQS	20:1 PT 77 AP			
16-1	ROAD	5208'	10'	-	(22.7)-(44.4)	-	-	-	(7.2)-9.5'	-	-	-	-	TO REMAIN	NA
16-2	TREE	5210'	-	-	(22.2)	-	-	-	(8.4)	-	-	-	-	TO REMAIN	NA
16-3	TREE	5208'	-	-	6.0'	-	-	-	10.4'	-	-	-	-	TO BE REMOVED	OBSTRUCTION REMOVAL
16-4	FENCE	5198'	4'	-	(6.2)	-	-	-	9.3'	-	-	-	-	TO BE RELOCATED	LAND ACQUISITION
16-5	TREE	5210'	-	-	9.2'	-	-	-	10.6'	-	-	-	-	TO BE REMOVED	OBSTRUCTION REMOVAL
16-6	TREE	5206'	-	-	3.6'	-	-	-	8.4'	-	-	-	-	TO BE REMOVED	OBSTRUCTION REMOVAL
16-7	TREE	5203'	4'	-	(16.1)	-	-	-	5.4'	-	-	-	-	TO BE REMOVED	OBSTRUCTION REMOVAL
16-8	FENCE	5204'	4'	-	(16.1)	-	-	-	(2.2)	-	-	-	-	TO REMAIN	NA
16-9	WINDSOCK	5228'	22'	-	(12.1)	-	-	-	1.8'	-	-	-	-	TO BE REMOVED	OBSTRUCTION REMOVAL
16-10	TREE	5200'	0'	-	6.2'	-	-	-	2.6'	-	-	-	-	TO BE REMOVED	OBSTRUCTION REMOVAL
16-11	BEACON	5232'	28'	-	(6.0)	-	-	-	7.8'	-	-	-	-	TO REMAIN	NA
16-12	GROUND	5187'	0'	2.2'	-	-	-	-	(1.8)	-	-	-	-	TO REMAIN	RUNWAY RECONSTRUCTION
16-13	BUILDING	5222'	19'	-	1.4'	-	-	-	16.3'	-	-	-	-	TO BE RELOCATED	INSTRUMENT APPROACH
16-14	GROUND	5188'	0'	-	(0.6)	-	-	-	(0.4)	-	-	-	-	TO REMAIN	NA
16-15	POLE	5234'	30'	-	(4.5)	-	-	-	0.4'	-	-	-	-	TO REMAIN	NA
16-16	FENCE	5207'	4'	-	(13.7)	-	-	-	0.1'	-	-	-	-	TO BE RELOCATED	LAND ACQUISITION
16-17	FENCE	5204'	5'	-	(8.4)	-	-	-	4.3'	-	-	-	-	TO BE RELOCATED	LAND ACQUISITION
16-18	TREE	5222'	-	-	(8.0)	-	-	-	6.3'	-	-	-	-	TO REMAIN	NA
16-19	ROAD	5209.9'-5221.3'	15'	-	6.7'-15.1'	-	-	-	9.8'-17.5'	-	16.2'	18.2'	-	TO BE RELOCATED	LAND ACQUISITION
16-20	TRAIL	5205'	0'	-	(28.8)	-	-	-	(12.9)	-	-	-	-	TO REMAIN	NA
16-21	TRAIL	5204'	0'	-	(6.4)	-	-	-	2.9'	-	-	-	-	TO BE RELOCATED	LAND ACQUISITION
16-22	GROUND	5206'	0'	-	(14.3)	-	-	-	(0.4)	-	-	-	-	TO REMAIN	NA
16-23	POLE	5221'	31'	-	(10.0)	-	-	-	3.9'	-	-	-	-	TO REMAIN	NA
16-24	WINDSOCK	5213'	12'	-	13.2'	-	-	-	11.2'	-	-	-	-	TO BE REMOVED	LAND ACQUISITION
16-25	POLE	5225'	34'	-	(8.0)	-	-	-	5.8'	-	-	-	-	TO REMAIN	NA
16-26	GROUND	5207'	0'	-	(13.2)	-	-	-	(4.7)	-	-	-	-	TO REMAIN	NA
16-27	TRAIL	5206'	0'	-	(26.8)	-	-	-	(17.3)	-	-	-	-	TO BE RELOCATED	LAND ACQUISITION
16-28	POLE	5207'	89'	-	(14.5)	-	-	-	(3.3)	-	-	-	-	TO REMAIN	NA
16-29	ROAD	5231'	15'	-	(16.9)	-	-	-	(5.1)	-	-	-	-	TO REMAIN	NA
16-30	ROAD	5228'	15'	-	(1.8)	-	-	-	(0.5)	-	(0.5)	(0.5)	-	TO REMAIN	NA
16-31	ROAD	5223'	15'	-	(4.2)	5.6'	-	-	(3.6)	(3.6)	(3.6)	(3.6)	-	TO REMAIN	NA
16-32	ROAD	5220'	15'	-	(7.8)	2.2'	-	-	(7.1)	(7.1)	(7.1)	(7.1)	-	TO REMAIN	NA
16-33	ROAD	5217'	15'	-	(10.9)	(0.9)	-	-	(10.2)	(10.2)	(10.2)	(10.2)	-	TO REMAIN	NA
16-34	ROAD	5213'	15'	-	(14.7)	-	-	-	(14.0)	-	(14.0)	(14.0)	-	TO REMAIN	NA
16-35	ROAD	5229'	15'	-	-	-	-	-	-	-	-	-	-	TO REMAIN	1.6'
16-36	ROAD	5227'	15'	-	-	-	-	-	0.0'	-	0.0'	0.0'	-	TO REMAIN	NA
16-37	ROAD	5211'-5236.1'	15'	-	(7.9)-(11.3)	-	-	-	9.2'-16.6'	-	-	-	-	TO REMAIN	NA
16-38	TREE	5217'	-	-	(17.8)	-	-	-	0.1'	-	-	-	-	TO REMAIN	NA
16-39	TREE	5236'	-	-	(10.7)	-	-	-	7.2'	-	-	-	-	TO REMAIN	NA
16-40	FENCE	5206'	6'	-	(14.9)	-	-	-	3.0'	-	-	-	-	TO BE RELOCATED	LAND ACQUISITION
16-41	POLE	5228'	34'	-	(2.3)	-	-	-	16.6'	-	-	-	-	TO REMAIN	NA
16-42	FENCE	5206'	4'	-	(4.9)	-	-	-	7.3'	-	-	-	-	TO BE RELOCATED	LAND ACQUISITION
16-43	FENCE	5206'	8'	-	(14.9)	-	-	-	(4.7)	-	-	-	-	TO BE RELOCATED	LAND ACQUISITION
16-44	TREE	5215'	-	-	(9.5)	-	-	-	8.4'	-	-	-	-	TO REMAIN	NA
16-45	TREE	5217'	-	-	8.1'	-	-	-	16.9'	-	-	-	-	TO BE REMOVED	OBSTRUCTION REMOVAL
16-46	TREE	5227'	-	-	(3.1)	-	-	-	1.5'	-	-	-	-	TO REMAIN	NA
16-47	TREE	5216'	-	-	3.3'	-	-	-	13.3'	-	-	-	-	TO BE REMOVED	OBSTRUCTION REMOVAL
16-48	TREE	5225'	-	-	(19.2)	-	-	-	(1.4)	-	-	-	-	TO REMAIN	NA
16-49	TREE	5226'	-	-	(14.4)	-	-	-	3.5'	-	-	-	-	TO REMAIN	NA
16-50	TREE	5223'	-	-	(18.8)	-	-	-	(0.9)	-	-	-	-	TO REMAIN	NA

BASED ON AERONAUTICAL SURVEY (AERAS) FROM SEPTEMBER 20, 2020 BY QUANTUM SPATIAL. SURFACES: P=PRIMARY T=TRANSITIONAL TH=THRESHOLD AP=PT 77 APPROACH (R#)=BELOW SURFACE (R#)=PENETRATION VALUE

Rev.	Date	Description



RIDDICK FIELD AIRPORT
 GRANITE COUNTY (OWNER)
 PHILIPSBURG, MONTANA

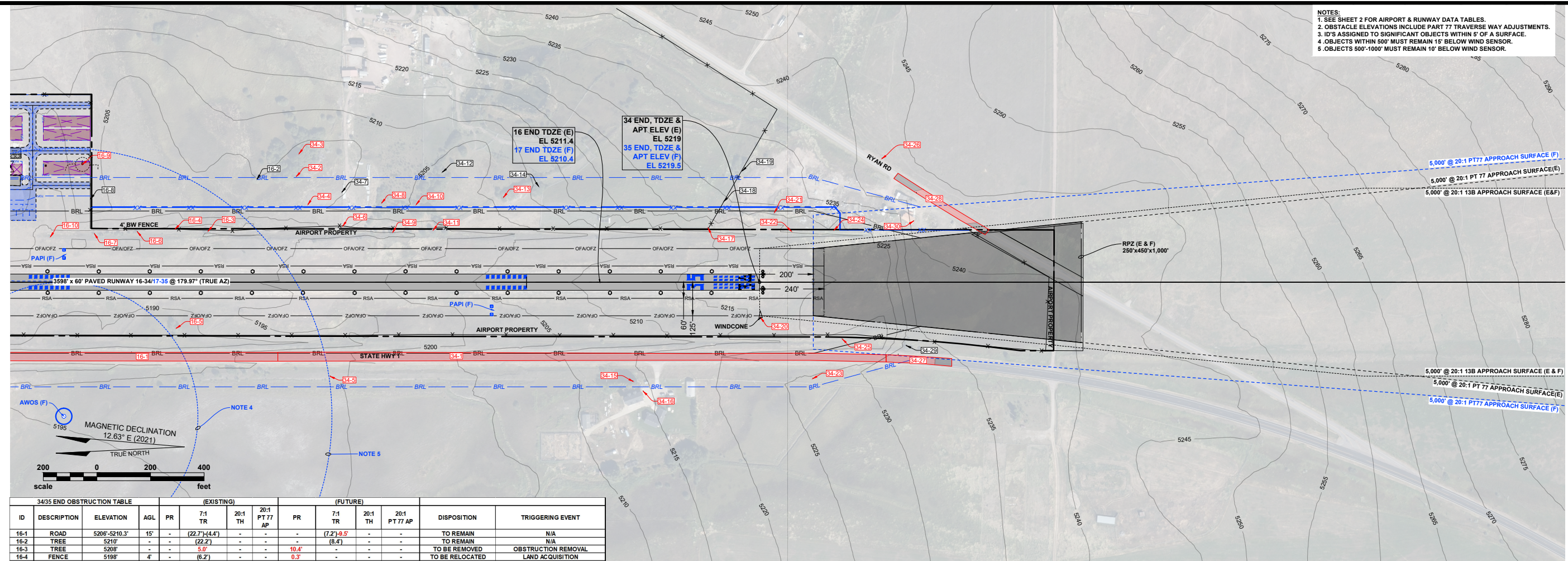
TO BE USED AS A COMPLETE DRAWING SET FOR PLANNING PURPOSES ONLY, NOT FOR CONSTRUCTION

**INNER PORTION OF THE APPROACH SURFACE
 RUNWAY 34 END
 (EXISTING & FUTURE)**

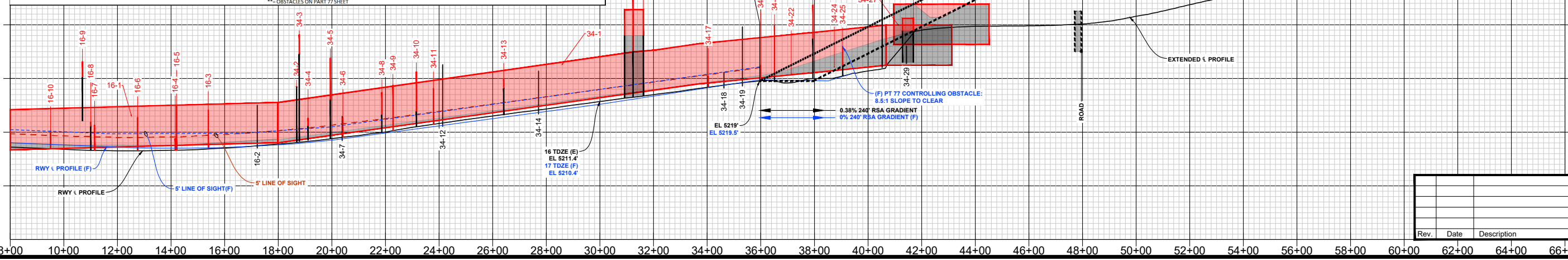
DRAFTED
 TLG
 REVIEWED
 ARTZ
 PROJECT NUMBER
 2005-00886

SHEET
6

- NOTES:
 1. SEE SHEET 2 FOR AIRPORT & RUNWAY DATA TABLES.
 2. OBSTACLE ELEVATIONS INCLUDE PART 77 TRAVERSE WAY ADJUSTMENTS.
 3. ID'S ASSIGNED TO SIGNIFICANT OBJECTS WITHIN 5' OF A SURFACE.
 4. OBJECTS WITHIN 500' MUST REMAIN 15' BELOW WIND SENSOR.
 5. OBJECTS 500'-1000' MUST REMAIN 10' BELOW WIND SENSOR.



3435 END OBSTRUCTION TABLE													
ID	DESCRIPTION	ELEVATION	AGL	PR	(EXISTING)			(FUTURE)			DISPOSITION	TRIGGERING EVENT	
					7:1 TR	20:1 TH	20:1 PT 77 AP	7:1 TR	20:1 TH	20:1 PT 77 AP			
16-1	ROAD	5206'-5210.3'	15'	-	(22.7)-(44.4)	-	-	(7.2)-9.5'	-	-	TO REMAIN	N/A	
16-2	TREE	5210'	-	-	(22.2)	-	-	(8.4)	-	-	TO REMAIN	N/A	
16-3	TREE	5208'	-	-	(5.0)	-	-	(10.4)	-	-	TO BE REMOVED	OBSTRUCTION REMOVAL	
16-4	FENCE	5185'	4'	-	(6.2)	-	-	(0.3)	-	-	TO BE RELOCATED	LAND ACQUISITION	
16-5	TREE	5210'	-	-	(9.8)	-	-	(12.5)	-	-	TO BE REMOVED	OBSTRUCTION REMOVAL	
16-6	TREE	5205'	-	-	(3.5)	-	-	(8.4)	-	-	TO BE REMOVED	OBSTRUCTION REMOVAL	
16-7	TREE	5203'	-	-	(1.7)	-	-	(5.4)	-	-	TO BE REMOVED	OBSTRUCTION REMOVAL	
16-8	FENCE	5204'	4'	-	(16.1)	-	-	(2.2)	-	-	TO REMAIN	N/A	
16-9	WINDSOCK	5226'	22'	-	(12.1)	-	-	(1.8)	-	-	TO BE RELOCATED	LAND ACQUISITION	
34-1	ROAD	5211'-5238.1'	15'	-	(7.9)-(13.3)	-	-	(9.2)-16.5'	-	-	TO REMAIN	N/A	
34-2	TREE	5217'	-	-	(17.8)	-	-	(0.4)	-	-	TO REMAIN	N/A	
34-3	TREE	5236'	-	-	(10.7)	-	-	(7.2)	-	-	TO REMAIN	N/A	
34-4	FENCE	5205'	6'	-	(14.9)	-	-	(3.0)	-	-	TO BE RELOCATED	LAND ACQUISITION	
34-5	POLE	5228'	34'	-	(2.3)	-	-	(15.6)	-	-	TO REMAIN	N/A	
34-6	FENCE	5205'	4'	-	(4.9)	-	-	(7.3)	-	-	TO BE RELOCATED	LAND ACQUISITION	
34-7	FENCE	5206'	5'	-	(22.5)	-	-	(4.7)	-	-	TO REMAIN	N/A	
34-8	TREE	5215'	5'	-	(9.5)	-	-	(8.4)	-	-	TO REMAIN	N/A	
34-9	TREE	5217'	-	-	(8.1)	-	-	(16.9)	-	-	TO BE REMOVED	OBSTRUCTION REMOVAL	
34-10	TREE	5222'	-	-	(3.1)	-	-	(14.8)	-	-	TO REMAIN	N/A	
34-11	TREE	5216'	-	-	(3.3)	-	-	(13.3)	-	-	TO BE REMOVED	OBSTRUCTION REMOVAL	
34-12	TREE	5225'	-	-	(19.2)	-	-	(1.4)	-	-	TO REMAIN	N/A	
34-13	TREE	5220'	-	-	(14.4)	-	-	(3.5)	-	-	TO REMAIN	N/A	
34-14	TREE	5223'	-	-	(18.8)	-	-	(0.9)	-	-	TO REMAIN	N/A	
34-15	TREE	5254'	-	-	(5.9)	-	-	(23.8)	-	-	TO REMAIN	N/A	
34-16	BUILDING	5246'	33'	-	(8.2)	-	-	(9.7)	-	-	TO REMAIN	N/A	
34-17	FENCE	5221'	5'	-	(6.8)	-	-	(4.0)	-	-	TO BE RELOCATED	LAND ACQUISITION	
34-18	FENCE	5222'	5'	-	(20.7)	-	-	(2.8)	-	-	TO REMAIN	N/A	
34-19	TREE	5239'	-	-	(20.8)	-	-	(2.9)	-	-	TO REMAIN	N/A	
34-20	WINDSOCK	5225'	9'	-	(4.7)	-	-	(5.9)	-	-	TO REMAIN	N/A	
34-21	TREE	5240'	-	-	(1.2)	-	-	(19.1)	-	-	TO REMAIN	N/A	
34-22	GROUND	5221'	0'	-	(7.0)	-	-	(2.4)	-	-	TO BE GRADED	LAND ACQUISITION	
34-23	POLE	5247'	33'	-	(5.2)	-	-	(12.6)	-	-	TO REMAIN	N/A	
34-24	GROUND	5224'	0'	-	(7.5)	-	-	(1.3)	-	-	TO REMAIN	N/A	
34-25	TREE	5232'	0'	-	(3.7)	-	-	(7.3)	-	-	TO BE REMOVED	LAND ACQUISITION	
34-26	POLE	5263'	32'	-	(12.8)	-	-	(4.2)	-	-	TO REMAIN	N/A	
34-27	ROAD	5239.9'-5240.5'	15'	-	(19.7)-(11.1)	-	-	(4.3)-5'	-	-	TO REMAIN	N/A	
34-28	ROAD	5246.9'-5248.1'	15'	-	(20.3)-(5.6)	(13.9)	(3.9)	(3.5)-1.8'	(13.9)	(3.9)-5.5'	TO REMAIN	N/A	
34-29	TREE	5232'	-	-	(15.5)	-	-	(4.4)	-	-	TO REMAIN	N/A	
34-30	BUILDING	5242'	14'	-	(4.8)	-	-	(4.7)	-	-	TO REMAIN	N/A	
34-31**	TREE	5480'	-	-	-	-	-	(32.9)	-	-	TO BE MITIGATED	OBST LIGHT ON HILL	
34-32**	POLE	5455'	35'	-	-	-	-	(4.8)	-	-	TO REMAIN	N/A	
34-33**	TREE	5504'	-	-	-	-	-	(39.9)	-	-	TO BE MITIGATED	OBST LIGHT ON HILL	



Rev.	Date	Description



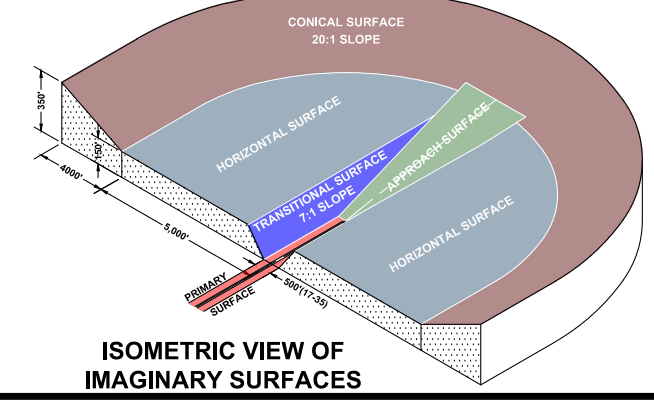
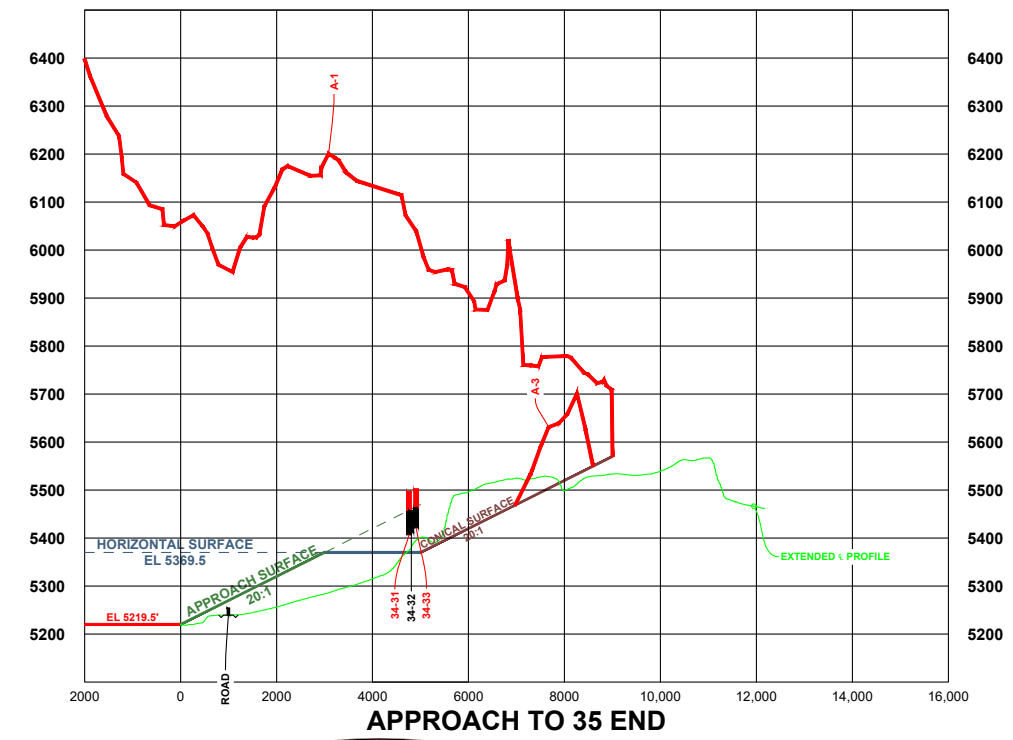
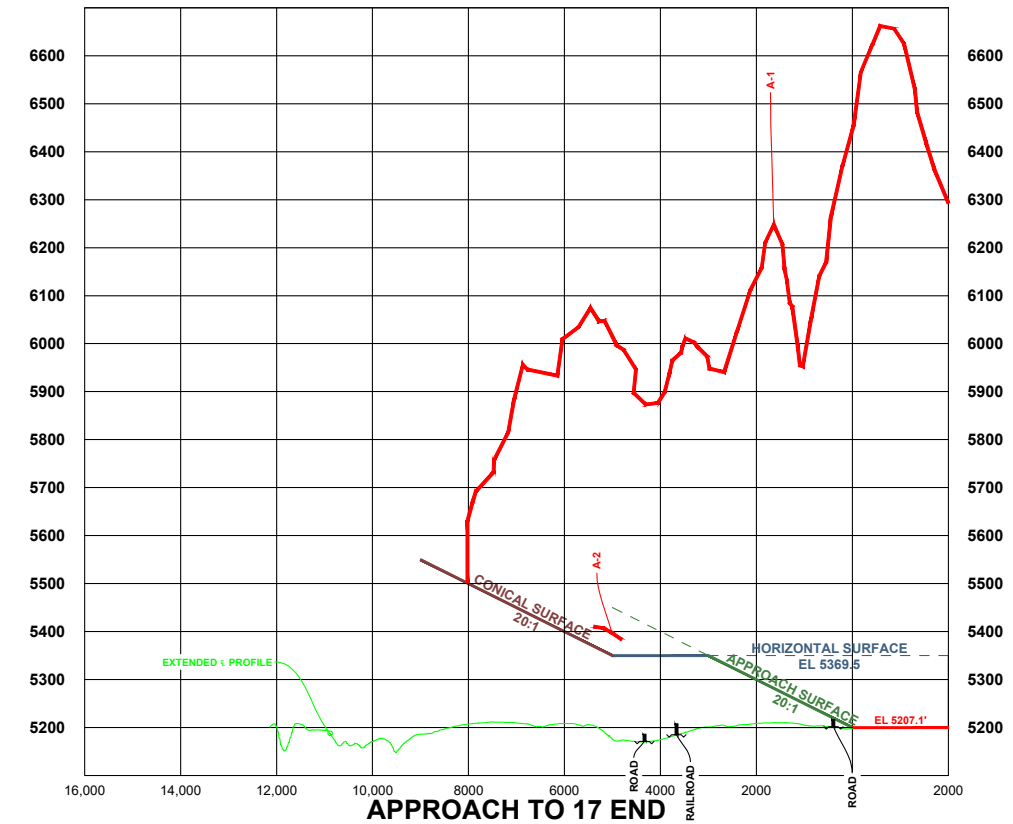
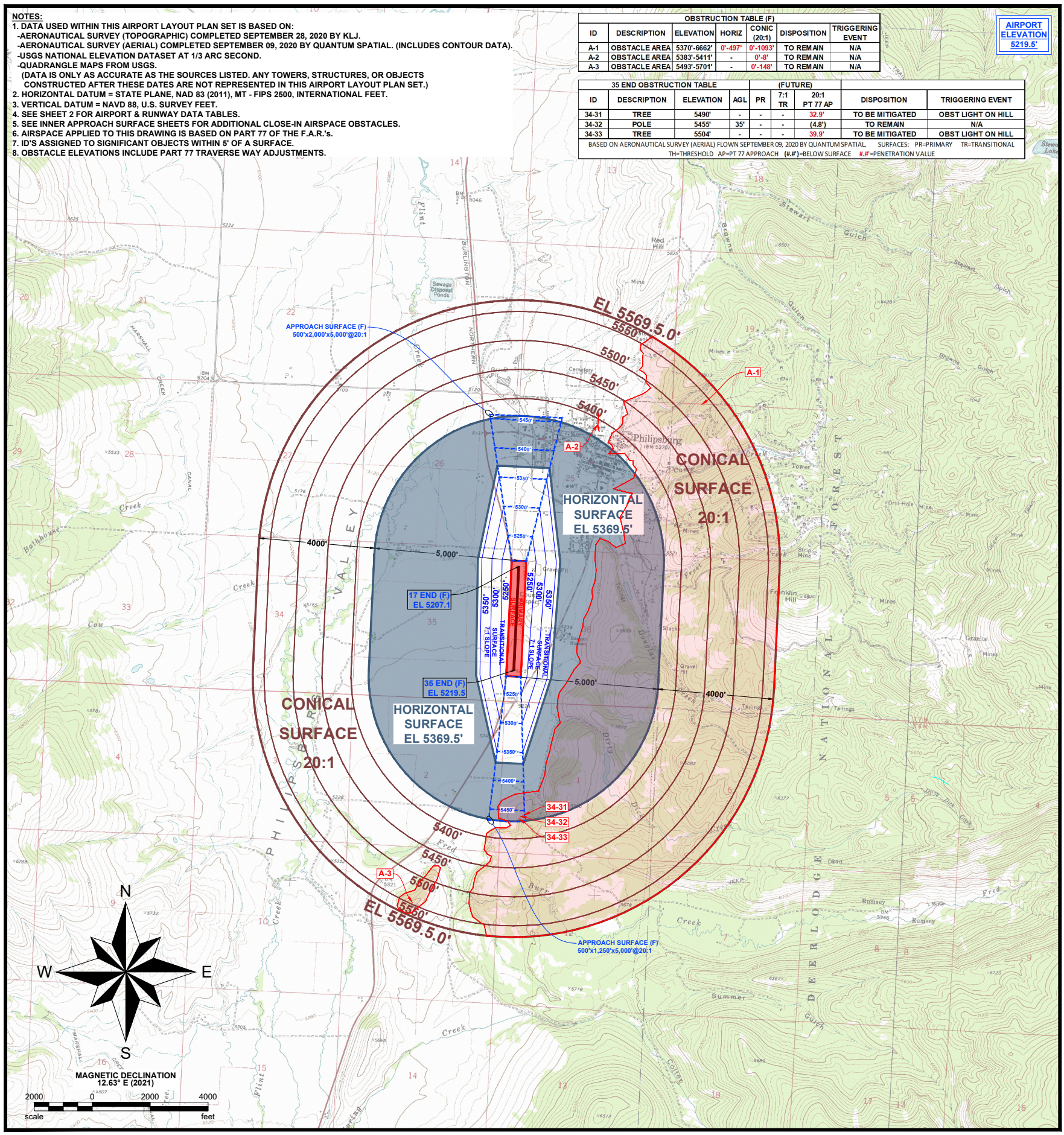
RIDDICK FIELD AIRPORT
 GRANITE COUNTY (OWNER)
 PHILIPSBURG, MONTANA

TO BE USED AS A COMPLETE DRAWING SET FOR PLANNING PURPOSES ONLY, NOT FOR CONSTRUCTION

PART 77 AIRSPACE (FUTURE)

DRAFTED
 TLG
 REVIEWED
 ARTZ
 PROJECT NUMBER
 2005-00886

SHEET
7



Rev.	Date	Description



RIDDICK FIELD AIRPORT
 GRANITE COUNTY (OWNER)
 PHILIPSBURG, MONTANA

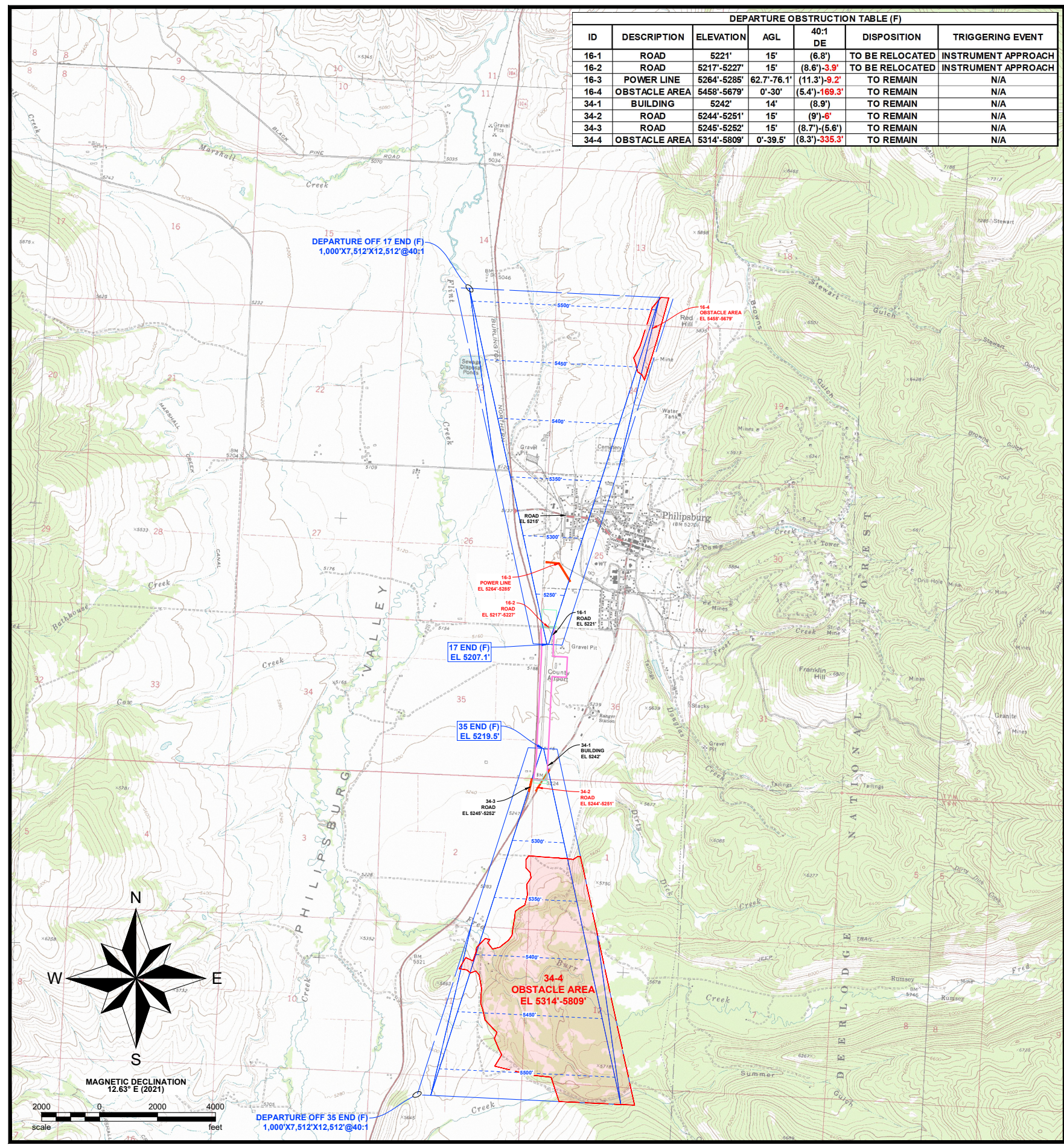
TO BE USED AS A COMPLETE DRAWING SET FOR PLANNING PURPOSES ONLY, NOT FOR CONSTRUCTION

RUNWAY DEPARTURE SURFACE

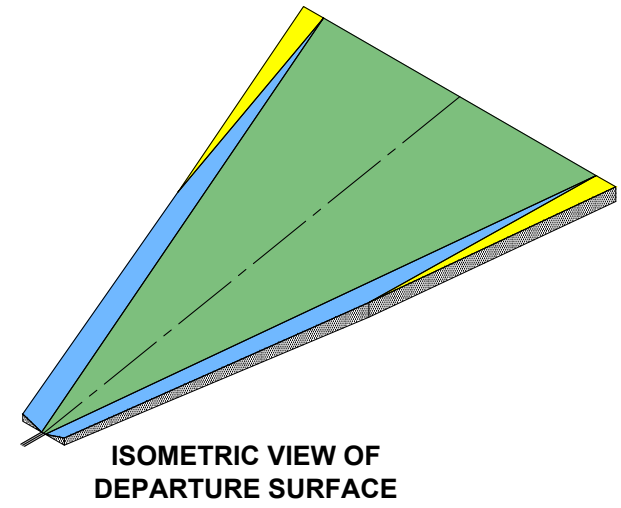
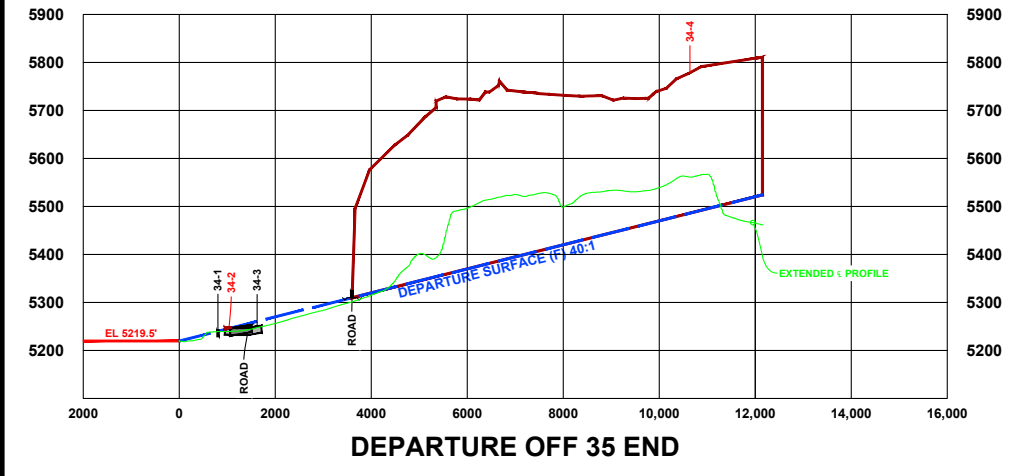
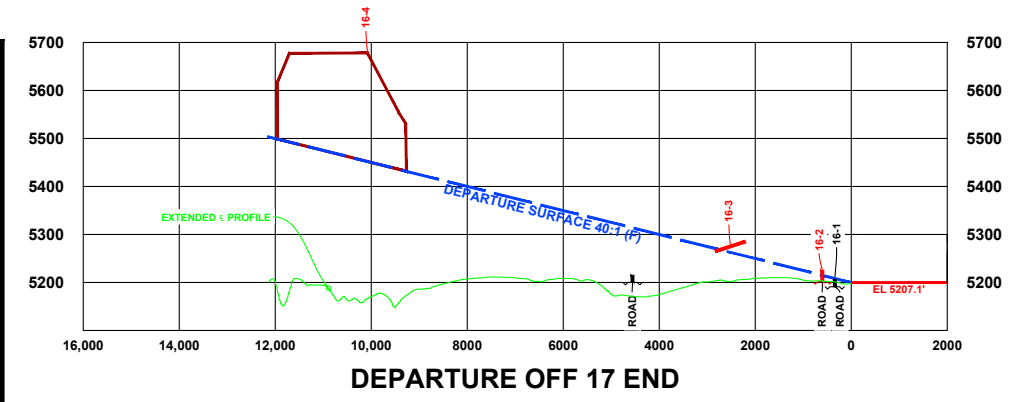
DRAFTED
 TLG
 REVIEWED
 ARTZ
 PROJECT NUMBER
 2005-00886

SHEET
8

©KLJ 2022



DEPARTURE OBSTRUCTION TABLE (F)						
ID	DESCRIPTION	ELEVATION	AGL	40:1 DE	DISPOSITION	TRIGGERING EVENT
16-1	ROAD	5221'	15'	(6.8')	TO BE RELOCATED	INSTRUMENT APPROACH
16-2	ROAD	5217'-5227'	15'	(8.6')-3.9'	TO BE RELOCATED	INSTRUMENT APPROACH
16-3	POWER LINE	5264'-5285'	62.7'-76.1'	(11.3')-9.2'	TO REMAIN	N/A
16-4	OBSTACLE AREA	5458'-5679'	0'-30'	(5.4')-169.3'	TO REMAIN	N/A
34-1	BUILDING	5242'	14'	(8.9')	TO REMAIN	N/A
34-2	ROAD	5244'-5251'	15'	(9')-6'	TO REMAIN	N/A
34-3	ROAD	5245'-5252'	15'	(8.7')-5.6'	TO REMAIN	N/A
34-4	OBSTACLE AREA	5314'-5809'	0'-39.5'	(8.3')-335.3'	TO REMAIN	N/A



- NOTES:**
- DATA USED WITHIN THIS AIRPORT LAYOUT PLAN SET IS BASED ON:
 - AERONAUTICAL SURVEY (TOPOGRAPHIC) COMPLETED SEPTEMBER 28, 2020 BY KLJ.
 - AERONAUTICAL SURVEY (AERIAL) COMPLETED SEPTEMBER 09, 2020 BY QUANTUM SPATIAL (INCLUDES CONTOUR DATA).
 - USGS NATIONAL ELEVATION DATASET AT 1/3 ARC SECOND.
 - QUADRANGLE MAPS FROM USGS.
 (DATA IS ONLY AS ACCURATE AS THE SOURCES LISTED. ANY TOWERS, STRUCTURES, OR OBJECTS CONSTRUCTED AFTER THESE DATES ARE NOT REPRESENTED IN THIS AIRPORT LAYOUT PLAN SET.)
 - HORIZONTAL DATUM = (GRID) STATE PLANE, NAD 83 (2011), MT - FIPS 2500, INTERNATIONAL FEET.
 - VERTICAL DATUM = NAVD 88, U.S. SURVEY FEET.
 - SEE SHEET 2 FOR AIRPORT & RUNWAY DATA TABLES.
 - SEE INNER APPROACH SURFACE SHEETS FOR ADDITIONAL CLOSE-IN AIRSPACE OBSTACLES.
 - ID'S ASSIGNED TO SIGNIFICANT OBJECTS WITHIN 5' OF A SURFACE.
 - OBSTACLE ELEVATIONS INCLUDE PART 77 TRAVERSE WAY ADJUSTMENTS.

- EXISTING AIRPORT PROPERTY
- EXISTING AIRSPACE EASEMENT
- OBSTACLE AREA

Rev.	Date	Description



RIDDICK FIELD AIRPORT
 GRANITE COUNTY (OWNER)
 PHILIPSBURG, MONTANA

TO BE USED AS A COMPLETE DRAWING SET FOR PLANNING PURPOSES ONLY, NOT FOR CONSTRUCTION

LAND USE

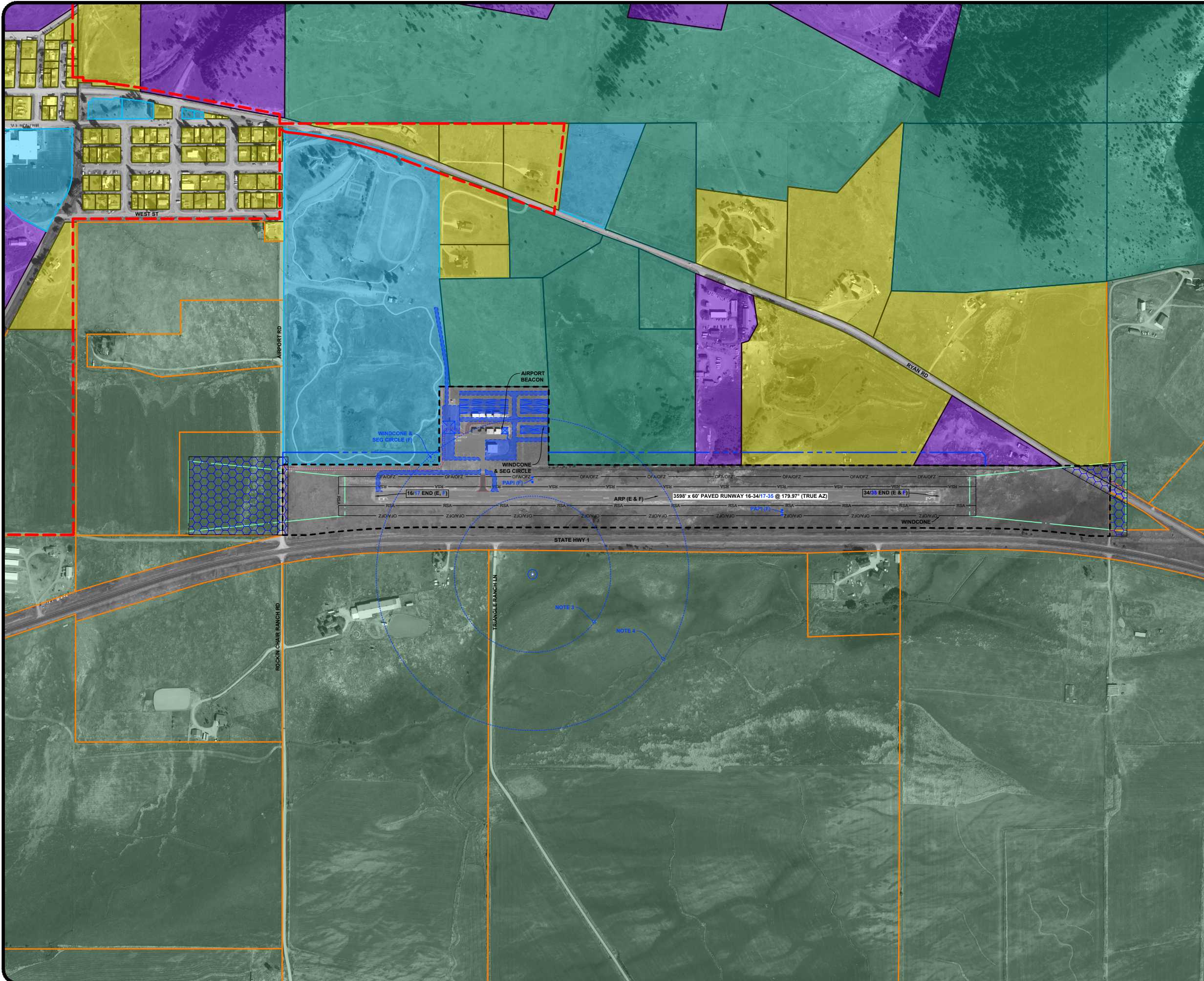
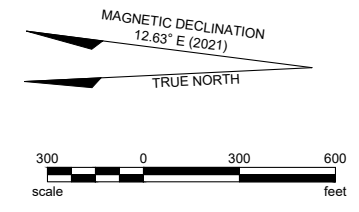
DRAFTED
 TLG
 REVIEWED
 ARTZ
 PROJECT NUMBER
 2005-00886

SHEET
9

NOTES:
 1. SEE SHEET 2 FOR AIRPORT & RUNWAY DATA TABLES.
 2. SEE INNER APPROACH SHEETS FOR OBSTACLE DATA.
 3. OBJECTS WITHIN 500' MUST REMAIN 15' BELOW WIND SENSOR.
 4. OBJECTS 500'-1000' MUST REMAIN 10' BELOW WIND SENSOR.

LEGEND

- AGRICULTURE
- INDUSTRIAL
- CONSERVATION/ RECREATION
- RESIDENTIAL
- INSTITUTIONAL
- NON-AERONAUTICAL
- AVIGATION EASEMENT
- FUTURE DEVELOPMENT
- REMOVAL
- EXISTING RPZ
- CITY BOUNDARY
- EXISTING AIRPORT PROPERTY
- FUTURE AIRPORT PROPERTY
- RUNWAY OBJECT FREE AREA (OFA)
- RUNWAY SAFETY AREA (RSA)



Rev.	Date	Description



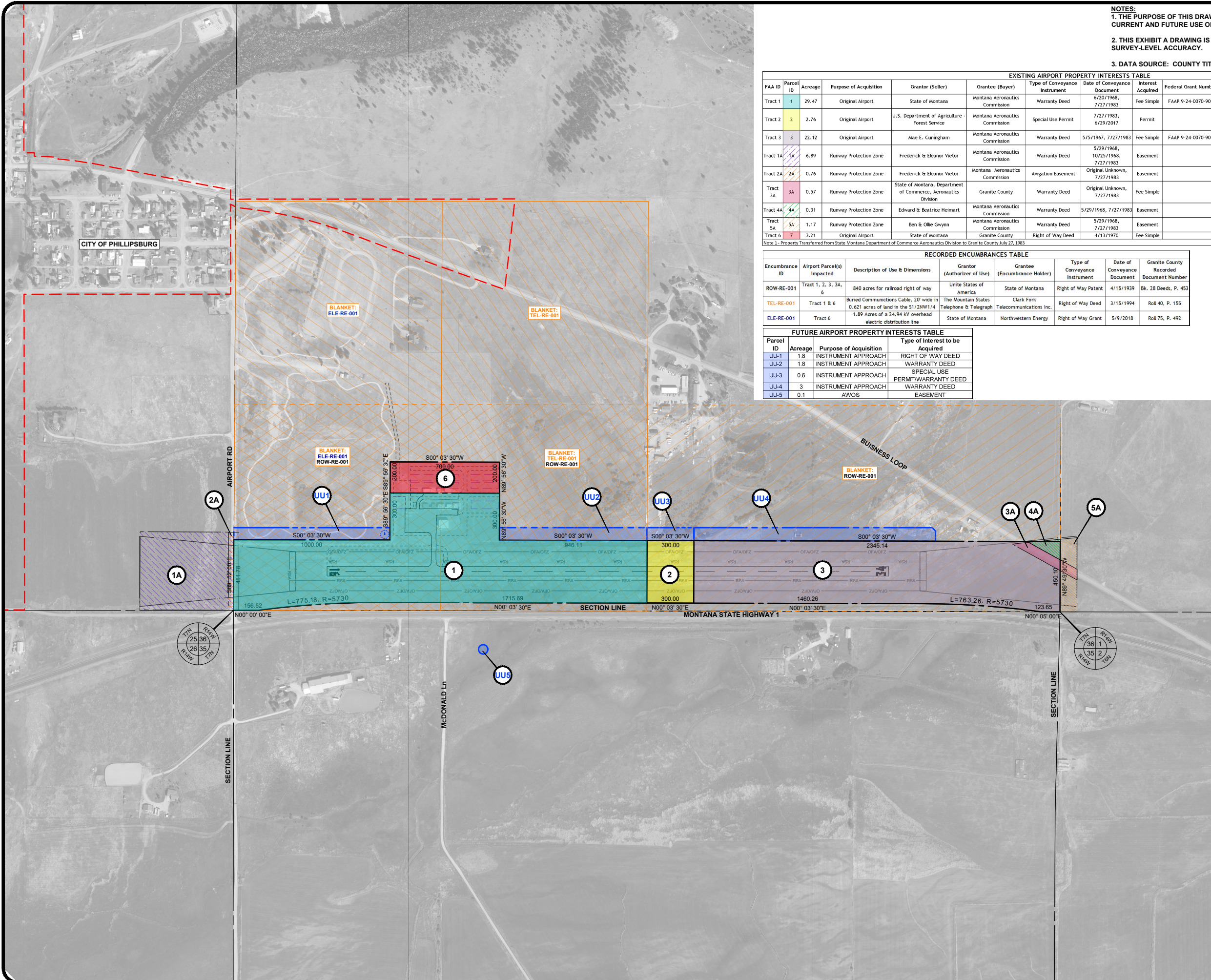
NOTES:
 1. THE PURPOSE OF THIS DRAWING IS TO PROVIDE INFORMATION FOR ANALYZING THE CURRENT AND FUTURE USE OF PROPERTY ACQUIRED.
 2. THIS EXHIBIT A DRAWING IS FOR PLANNING PURPOSES ONLY AND IS NOT SURVEY-LEVEL ACCURACY.
 3. DATA SOURCE: COUNTY TITLE SEARCH APRIL 14 2021.

EXISTING AIRPORT PROPERTY INTERESTS TABLE													
FAA ID	Parcel ID	Acreage	Purpose of Acquisition	Grantor (Seller)	Grantee (Buyer)	Type of Conveyance Instrument	Date of Conveyance Document	Interest Acquired	Federal Grant Number	Granite County Recorded Document	Date of Title Research	Encumbrance(s)	Notes
Tract 1	1	29.47	Original Airport	State of Montana	Montana Aeronautics Commission	Warranty Deed	6/20/1968, 7/27/1983	Fee Simple	FAAP 9-24-0070-901	Book 42, P. 472, Roll 18, P. 389	4/14/2021	Y	Note 1
Tract 2	2	2.76	Original Airport	U.S. Department of Agriculture - Forest Service	Montana Aeronautics Commission	Special Use Permit	7/27/1983, 6/29/2017	Permit		File Code 2720, Roll 18, P. 389, 69285	4/14/2021	Y	Note 1; Permit expires 12/31/2046
Tract 3	3	22.12	Original Airport	Mae E. Cuninghame	Montana Aeronautics Commission	Warranty Deed	5/5/1967, 7/27/1983	Fee Simple	FAAP 9-24-0070-901	Book 42, P. 61, Roll 18, P. 389	4/14/2021	Y	Note 1
Tract 1A	1A	6.89	Runway Protection Zone	Frederick & Eleanor Vietor	Montana Aeronautics Commission	Warranty Deed	5/29/1968, 10/25/1968, 7/27/1983	Easement		Book 42, P. 370, Book 42, P. 484, Roll 18, P. 389	4/14/2021		Note 1
Tract 2A	2A	0.76	Runway Protection Zone	Frederick & Eleanor Vietor	Montana Aeronautics Commission	Avigation Easement	Original Unknown, 7/27/1983	Easement		Original Unknown, Roll 18, P. 389	4/14/2021		Note 1
Tract 3A	3A	0.57	Runway Protection Zone	State of Montana, Department of Commerce, Aeronautics Division	Granite County	Warranty Deed	Original Unknown, 7/27/1983	Fee Simple		Original Unknown, Roll 18, P. 389	4/14/2021	Y	Note 1
Tract 4A	4A	0.31	Runway Protection Zone	Edward & Beatrice Heimart	Montana Aeronautics Commission	Warranty Deed	5/29/1968, 7/27/1983	Easement		Book 42, P. 371, Roll 18, P. 389	4/14/2021		Note 1
Tract 5A	5A	1.17	Runway Protection Zone	Ben & Olle Gwynn	Montana Aeronautics Commission	Warranty Deed	5/29/1968, 7/27/1983	Easement		Book 42, P. 384, Roll 18, P. 389	4/14/2021		Note 1
Tract 6	7	3.21	Original Airport	State of Montana	Granite County	Right of Way Deed	4/13/1970	Fee Simple		D-5941	1/12/2022	Y	

Note 1 - Property Transferred from State Montana Department of Commerce Aeronautics Division to Granite County July 27, 1983

RECORDED ENCUMBRANCES TABLE							
Encumbrance ID	Airport Parcel(s) Impacted	Description of Use & Dimensions	Grantor (Authorizer of Use)	Grantee (Encumbrance Holder)	Type of Conveyance Instrument	Date of Conveyance Document	Granite County Recorded Document Number
ROW-RE-001	Tract 1, 2, 3, 3A, 6	840 acres for railroad right of way	United States of America	State of Montana	Right of Way Patent	4/15/1939	Bk. 28 Deeds, P. 453
TEL-RE-001	Tract 1 & 6	Buried Communications Cable, 20' wide in 0.821 acres of land in the 51/2NW1/4	The Mountain States Telephone & Telegraph	Clark Fork Telecommunications Inc.	Right of Way Deed	3/15/1994	Roll 40, P. 155
ELE-RE-001	Tract 6	1.89 Acres of a 24.94 kV overhead electric distribution line	State of Montana	Northwestern Energy	Right of Way Grant	5/9/2018	Roll 75, P. 492

FUTURE AIRPORT PROPERTY INTERESTS TABLE			
Parcel ID	Acreage	Purpose of Acquisition	Type of Interest to be Acquired
UU-1	1.8	INSTRUMENT APPROACH	RIGHT OF WAY DEED
UU-2	1.8	INSTRUMENT APPROACH	WARRANTY DEED
UU-3	0.6	INSTRUMENT APPROACH	SPECIAL USE PERMIT/WARRANTY DEED
UU-4	3	INSTRUMENT APPROACH	WARRANTY DEED
UU-5	0.1	AWOS	EASEMENT



LEGEND

- ① PARCEL DESIGNATION
- - - CITY BOUNDARY
- - - EXISTING PARCEL BOUNDARY
- - - ULTIMATE PARCEL BOUNDARY
- ▨ EXISTING ENCUMBRANCE

MAGNETIC DECLINATION
12.63°E (2021)

TRUE NORTH

300 0 300 600
scale feet

RIDDICK FIELD AIRPORT
 GRANITE COUNTY (OWNER)
 PHILLIPSBURG, MONTANA

EXHIBIT "A" PARCEL INVENTORY MAP

DRAFTED
KNV
REVIEWED
ARTZ
PROJECT NUMBER
2005-00886

SHEET
EX-A1

Rev.	Date	Description

TO BE USED AS A COMPLETE DRAWING SET FOR PLANNING PURPOSES ONLY, NOT FOR CONSTRUCTION